



Elyssa Corporation

Manufacturers of Simple Solutions



Manufacturers of

DigiVUE

Sophisticated Security Systems

EDV-004

DigiVue® 4 Channel Card with Harness and Software



- SINGLE CARD
30 FPS ÷ 4 CAMERAS = 4 INPUTS @ 7.5FPS PER INPUT
- 4PCS OF EDV-004
120 FPS ÷ 16 CAMERAS = 16 INPUTS @ 7.5FPS PER INPUT

EDV-009

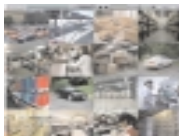
DigiVue® 9 Channel Card with Harness and Software



- 30 FPS ÷ 9 CAMERAS = 4 INPUTS @ 3.3FPS PER INPUT

EDV-016

DigiVue® 16 Channel Card with Harness and Software



- 30 FPS ÷ 16 CAMERAS = 16 INPUTS @ 1.88FPS PER INPUT

Common Specifications:

- BUILT-IN DUPLEX MULTIPLEXER
- VIDEO RECORDING/STORAGE CAPABILITY
- NETWORK/INTERNET/DIAL-UP REMOTE ACCESS
- ALARM CAPABILITY WITH AUTO COMMUNICATION
- TIME / DATE STAMP
- SCHEDULED RECORDING
- DIGITAL FREEZE AND ZOOM
- VIDEO IMAGE ENHANCE MODE
- ADJUSTABLE COMPRESSION RATE
- TIME-LAPSE RECORDING - MULTIPLE CAMERAS
- REAL-TIME RECORDING - SINGLE CAMERA ONLY
- SEQUENTIAL SWITCHING OPTION WITH ADJUSTABLE DWELL TIME
- INSTANT ACCESS - RAPID IMAGE RETRIEVAL BY CAMERA, DATE AND TIME
- VIDEO MOTION DETECTION FEATURING: MULTIPLE MASKING, SENSITIVITY ADJUSTMENT
- EVENT BUFFER ALLOWS YOU TO RECORD AND SAVE PRE AND POST ALARM IMAGE
- VIEW, PLAYBACK, AND PRINT DIGITAL IMAGES WITH GREATER CLARITY THAN VIDEO TAPE
- SAVE VIDEO IN AVI FORMAT
- SAVE STILL PICTURES IN JPEG FORMAT
- IMAGE EXPORT & PRINTING
- FULL DUPLEX MULTIPLEX RECORDING
- MULTI-SCREEN OR SINGLE CAMERA VIEWING
- RECORD & PLAYBACK SIMULTANEOUSLY
- REMOTE VIEWING • OVER WEB • STANDARD PHONE LINES • LAN • WAN

Voice Dial Alerts - Get a call with your own pre-recorded message when video is lost or when someone enters a protected area. Requires 2-way voice modem.

E-Mail Alerts - Get an e-mail with your own pre-recorded message when video is lost or when someone enters a protected area. Requires internet connection with DNS server

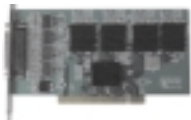
Compatible With: Windows® XP and 2000



Recommended System: Pentium® III/550, 128M RAM, 32M Video Card or above.

Minimum System Requirements: Pentium® II/266, 64M RAM, 8M Video Card or above.

EDV-416HS



DigiVue® High Speed 120fps System

Record and view 4 cameras in 30 fps. real time or up to 16 cameras at 7.5 fps. Flexible frame rate assignments for configurations between 4 and 16 cameras. Recording time with a fully utilized system of 16 color cameras at highest quality will require 1gb per hour of action. Many other configurations are possible and will require less storage space.

Use as a 4 channel card: 120 fps ÷ 4 cameras = 4 inputs @ 30fps per input
Use as a 9 channel card: 120 fps ÷ 9 cameras = 9 inputs @ 13.33fps per input
Use as a 16 channel card: 120 fps ÷ 16 cameras = 16 inputs @ 7.5fps per input

- TIME / DATE STAMP
- SCHEDULED RECORDING
- DIGITAL FREEZE AND ZOOM
- VIDEO IMAGE ENHANCE MODE
- TIME-LAPSE RECORDING - MULTIPLE CAMERAS
- REAL TIME RECORDING - UP TO 4 CAMERAS
- SEQUENTIAL SWITCHING OPTION WITH ADJUSTABLE DWELL TIME
- INSTANT ACCESS - RAPID IMAGE RETRIEVAL BY CAMERA, DATE, AND TIME
- VIDEO MOTION DETECTION FEATURING: • MULTIPLE MASKING • SENSITIVITY ADJUSTMENT
- EVENT BUFFER ALLOWS YOU TO RECORD AND SAVE PRE-ALARM IMAGES
- VIRTUAL VCR FUNCTIONS - EASY ON-SCREEN MENUS: VCR PLAY, RECORD, FF AND REWIND
- VIEW, PLAYBACK, AND PRINT DIGITAL IMAGES WITH GREATER CLARITY THAN VIDEO TAPE
- SAVE VIDEO IN AVI FORMAT
- SAVE STILL PICTURES IN JPEG FORMAT
- ADJUSTABLE VIDEO COMPRESSION RATE
- IMAGE EXPORT & PRINTING
- FULL DUPLEX MULTIPLEX RECORDING
- MULTI-SCREEN OR SINGLE CAMERA VIEWING
- RECORD & PLAYBACK SIMULTANEOUSLY
- REMOTE VIEWING • OVER WEB • STANDARD PHONE LINES • LAN • WAN
- E-MAIL ALERTS: SEND E-MAIL WITH SNAPSHOT WHEN A PROTECTED AREA IS VIOLATED OR VIDEO IS LOST (REQUIRES INTERNET CONNECTION WITH DNS SERVER)
- VOICE DIAL ALERTS SENDS RECORDED WAV FILE MESSAGE • WHEN CAMERA VIDEO FAILS OR WHEN A PROTECTED AREA IS VIOLATED (REQUIRES 2-WAY VOICE MODEM)

Compatible With:
Windows XP & 2000



Recommended System: Pentium® III/550, 128M RAM, 32M Video Card or above.
Minimum System Requirements: Pentium® II/266, 64M RAM, 8M Video Card or above.

EDV-XVIEW4



DigiVue® MPEG4 DVR System with XView Technology

- 60 FPS PER CARD
- TIME / DATE STAMP
- ENHANCED MPEG4 FORMAT
- MONITORS MULTIPLE IP ADDRESSES
- SUPPORTS MULTIPLE CARD INSTALLATIONS
- 16 VIDEO AND 1 AUDIO CHANNEL WITH 4 CARDS
- SUPPORTS LAN, WAN, DIAL-UP AND INTERNET MONITORING USING: CLIENT SOFTWARE, INTERNET EXPLORER®, OR WINDOWS MEDIA PLAYER®
- SOFTWARE SUPPLIED FOR 4 CHANNEL VIDEO OR 4 CHANNEL VIDEO AND 1 CHANNEL AUDIO (WITH SOUND CARD)

FEATURES:

- | | |
|--------------------|--|
| • O.S. | WINDOWS XP / 2000* |
| • DISPLAY SCREEN | 1 / 4 / 9 / 16 / FULL SCREEN |
| • MOTION DETECTION | SELECTABLE FOR EACH CAMERA |
| • PASSWORD | SYSTEM / PLAYBACK / REMOTE USERS |
| • PLAYBACK SPEED | FORWARD / BACK / STEP / FAST / SLOW |
| • RESOLUTION | 160X120 / 240X180 / 320X240 / 640X240 |
| • RECORD MODE | EVENT / CONTINUOUS / SCHEDULE RECORDING |
| • STORAGE | MULTIPLE HDD / CD-RW / DAT / MO / ZIP / RAID |
| • COLOR ADJUSTMENT | LIGHT, CONTRAST, HUE, SATURATION (INDIVIDUAL CAMERA) |
| • PTZ | RS422 / RS485 CONTROLLED PTZ & LIGHT / POWER / WIPER |
| • MULTI TASK | MONITORING / RECORDING / PTZ CONTROL / REMOTE / BACKUP |

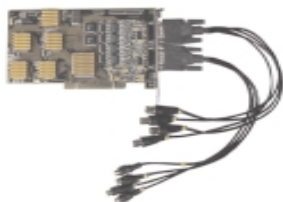
Recommended For All Systems (Minimum For 3+ Card Installations):

Pentium® 4 / 2.4GHz, 512MB RAM, 64MB AGP Video Card or above with 3 or more PCI slots, & a 120 Gb PARTITIONED hard drive

Minimum System Requirements For 1-2 Card Installations:

Pentium® 4 / 1.8GHz, 256MB RAM, 32MB AGP Video Card or above with 3 or more PCI slots, & a 120 Gb PARTITIONED hard drive.

EDV-4AV



DigiVue® MPEG4 A/V DVR System

- WATERMARK BY DATE & TIME
- SUPPORT MULTI-RESOLUTION QCIF-VGA
- 4 CHANNEL REAL TIME VIDEO WITH 4 CHANNEL AUDIO
- SUPPORT REAL TIME INTERNET MONITORING
- UP TO 16 VIDEO & 16 AUDIO CHANNELS WITH 4 CARDS

FEATURES:

- | | |
|----------------------|--|
| • INPUT SIGNAL | 4 REAL TIME VIDEO AND 4 REAL TIME AUDIO PER CARD |
| • DISPLAY FPS | 120FPS / NTSC PER CARD, MAX. 480FPS / NTSC IN 4 CARD SYSTEMS |
| • RECORD FPS | 120FPS / NTSC PER CARD, MAX. 480FPS / NTSC IN 4 CARD SYSTEMS |
| • I/O | 13CH (PRINTER PORT) OR 16CH (I/O CARD) |
| • DISPLAY SCREEN | 1 / 4 / 9 / 16 / FULL SCREEN |
| • AUDIO INPUT | 4 SYNCHRONIZED MONO, UP TO 16 AUDIO PER SYSTEM, 1 CH STEREO |
| • COLOR ADJUST | ADJUSTABLE LIGHT, CONTRAST, HUE, SATURATION PER CAMERA |
| • RESOLUTION | 160X120 / 240X180 / 320X240 / 480X360 / 640X480 |
| • RECORD MODE | EVENT / CONTINUOUS / SCHEDULE RECORDING |
| • COMPRESSION | SPECIAL MPEG4 FORMAT, FRAME SIZE: .1K~2.5K, 1200HR~4000HR / 80GB |
| • AUDIO | MONO SYNCHRONIZED WAV, ONE STEREO (OPTION) |
| • MULTI TASK | MONITORING / RECORDING / PTZ CONTROL / REMOTE / BACKUP |
| • MOTION DETECTION | 16 ZONE X MULTI AREA FOR EACH CAMERA |
| • STORAGE | HDD / VDRAM / CD-RW / DAT / MO / ZIP / RAID, UP TO 24 DRIVES |
| • PTZ | RS422 / RS485 CONTROLLED PTZ & LIGHT / POWER / WIPER |
| • PLAYBACK SPEED | FORWARD / BACK / STEP / FAST / SLOW |
| • SCHEDULE RECORDING | BY DAY & TIME WEEKLY / SET BY INDIVIDUAL CAMERA |
| • PASSWORD | SYSTEM / PLAYBACK / LOCAL AND REMOTE USERS |
| • WATER MARK | WATER MARKING BY DATE & TIME. NOT EDITABLE & NOT REPLACEABLE |
| • WATCHDOG | SOFTWARE & HARDWARE WATCHDOG (WITH OPTIONAL ECWD1) |
| • O.S. | WINDOWS 2000 / XP |
| • NETWORK | PSTN / ISDN / LAN / ADSL / INTERNET |
| • REMOTE CONTROL | FULL FUNCTION REMOTE CONTROL AND REMOTE AUDIO TRANSMISSION |
| • REMOTE | LAN AND ADSL: REAL TIME IN 320X240, PTSN: 5-25FPS IN QCIF |
| • REMOTE RECORDING | REMOTE PLAYBACK, REMOTE RECORDING, & EMERGENCY RECORDING |

RECOMMENDED SYSTEM PENTIUM® IV/2.4G, 512M RAM, 64M AGP VIDEO CARD OR ABOVE.

MINIMUM REQUIREMENTS PENTIUM® IV/1.8G, 256M RAM, 32M AGP VIDEO CARD OR ABOVE

ECWD1



DigiVue® Watchdog Module For EDV-4AV

- MONITORS DRIVE ACTIVITY
- INSURES CONTINUOUS SITE MONITORING

Automatically restarts computer if a "freeze" or "lock-up" condition occurs

ECMIC1



Microphone Module With Pre-Amp

- VOLTAGE - 8-16VDC
- OUTPUT IMPEDENCE - 47K OHMS
- OUTPUT SENSITIVITY - 60DB~-3DB
- FREQUENCY RESP. - 100HZ - 1,000Hz

Add audio to any line level Input: mixers, power Amps, PCs, DVRs, VCRs, etc.

EDV-XV816



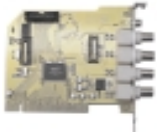
DigiVue® MPEG4 A/V DVR System with XView Technology

- 240 FPS PER CARD
- MONITORS MULTIPLE IP ADDRESSES
- SUPPORT MULTI-RESOLUTION QCIF-VGA
- SUPPORTS MULTIPLE CARD INSTALLATIONS
- 32 VIDEO CHANNELS AND 1 AUDIO CHANNEL WITH 2 CARD MAXIMUM
- 8 OR 16 CHANNEL VIDEO AND 1 CHANNEL AUDIO (WITH SOUND CARD)
- SUPPORTS REAL TIME LAN, WAN, AND INTERNET MONITORING: VIA LAN & ADSL AT REAL TIME IN 320X240, OR VIA PTSN (DIAL UP) AT 5-25 FPS IN QCIF

FEATURES:

- | | |
|--------------------|---|
| • O.S. | WINDOWS XP / 2000* |
| • PASSWORD | SYSTEM / PLAYBACK / REMOTE USERS |
| • PLAYBACK SPEED | FORWARD 2X, 4X, 6X, & 8X / BACK / STEP |
| • MOTION DETECTION | 16 INDIVIDUALLY ADJUSTABLE ZONES PER CHANNEL |
| • RECORD MODE | EVENT WITH PRE-ALARM / CONTINUOUS / SCHEDULE RECORDING |
| • DISPLAY SCREEN | 1 / 4 / 6 / 9 / 10 / 13 / 16 / 25 / 32 / FULL SCREEN |
| • RESOLUTION | 160X120 / 240X180 / 320X240 |
| • PTZ | RS422 / RS485 CONTROLLED PTZ AND LIGHT / POWER / WIPER |
| • MULTI-TASK | MONITORING / RECORDING / PTZ CONTROL / REMOTE / BACKUP |
| • WATER MARK | TIME WATER MARKING, NOT EDITABLE OR REPLACEABLE |
| • VIRTUAL MAPPING | SIMPLIFIED ACCESS THROUGH GRAPHIC REPRESENTATION OF SITE |
| • REMOTE CONTROL | FULL REMOTE FUNCTION AND REMOTE AUDIO TRANSMISSION |
| • COMPRESSION | SPECIAL MPEG4, FRAME SIZE: .1K~2.5K, 1200HR~4000HR / 80GB |
| • REMOTE RECORD | REMOTE PLAYBACK, REMOTE RECORDING AND EMERGENCY RECORDING |
| • COLOR ADJUSTMENT | ADJUSTABLE LIGHT, CONTRAST, HUE, SATURATION (INDIVIDUAL CAMERA) |
| • STORAGE | MULTIPLE HDD / VDRAM / CD-RW / DAT / MO / ZIP / RAID DRIVES |

EDV-XV425



DigiVue® MPEG4 A/V DVR System with XView Technology

- 60 FPS PER CARD
- MONITORS MULTIPLE IP ADDRESSES
- SUPPORT MULTI-RESOLUTION QCIF-VGA
- SUPPORTS MULTIPLE CARD INSTALLATIONS
- 20 VIDEO CHANNELS AND 1 AUDIO CHANNEL WITH 5 CARDS
- 4 CHANNEL VIDEO AND 1 CHANNEL AUDIO (WITH SOUND CARD)
- SUPPORTS REAL TIME LAN, WAN, AND INTERNET MONITORING: VIA LAN & ADSL AT REAL TIME IN 320X240, OR VIA PTSN (DIAL UP) AT 5-25 FPS IN QCIF

FEATURES:

- | | |
|--------------------|---|
| • O.S. | WINDOWS XP / 2000* |
| • PASSWORD | SYSTEM / PLAYBACK / LOCAL AND REMOTE USERS |
| • PLAYBACK SPEED | FORWARD 2X, 4X, 6X, & 8X / BACK / STEP |
| • MOTION DETECTION | 16 ZONE X MULTI AREA FOR EACH CAMERA |
| • RECORD MODE | EVENT WITH PRE-ALARM / CONTINUOUS / SCHEDULE RECORDING |
| • DISPLAY SCREEN | 1 / 4 / 6 / 9 / 10 / 13 / 16 / 25 / 32 / FULL SCREEN |
| • RESOLUTION | 160X120 / 240X180 / 320X240 |
| • PTZ | RS422 / RS485 CONTROLLED PTZ AND LIGHT / POWER / WIPER |
| • MULTI-TASK | MONITORING / RECORDING / PTZ CONTROL / REMOTE / BACKUP |
| • WATER MARK | TIME WATER MARKING, NOT EDITABLE OR REPLACEABLE |
| • VIRTUAL MAPPING | SIMPLIFIED ACCESS THROUGH GRAPHIC REPRESENTATION OF SITE |
| • REMOTE CONTROL | FULL REMOTE FUNCTION AND REMOTE AUDIO TRANSMISSION |
| • COMPRESSION | SPECIAL MPEG4, FRAME SIZE: .1K~2.5K, 1200HR~4000HR / 80GB |
| • REMOTE RECORD | REMOTE PLAYBACK, REMOTE RECORDING AND EMERGENCY RECORDING |
| • COLOR ADJUSTMENT | ADJUSTABLE LIGHT, CONTRAST, HUE, SATURATION (INDIVIDUAL CAMERA) |
| • STORAGE | MULTIPLE HDD / VDRAM / CD-RW / DAT / MO / ZIP / RAID DRIVES |

EC-ICVO-1



Upgrade Chip for DigiVue® EDV-XV425

- ENABLES A SPOT-MONITOR OUTPUT

EDV-USBQ01



DigiVue® USB Real Time Color Quad

- GRAPHIC USER INTERFACE
- REAL TIME RECORDING UP TO 4 CAMERAS
- 30 FPS PER CAMERA / 120 FPS TOTAL
- REAL TIME VIEWING
- 30 FPS PER CAMERA / 120 FPS TOTAL
- REMOTE VIEWING ACCESS – LAN / WAN / INTERNET
- 640 X 480 MAXIMUM RESOLUTION
- MPEG4
- RECORDS ALL 4 IMAGES INDEPENDENTLY
- WINDOWS XP / 2000
- USB 2.0 REQUIRED
- P4 OR EQUIVALENT

EDV-DVRSTK

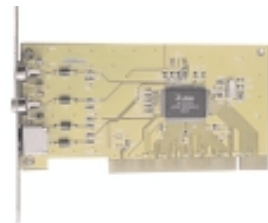


DigiVue® USB DVR Stick

- ACCEPTS THE OUTPUT OF ANY QUAD AND RECORDS ALL 4 IMAGES INDEPENDENTLY
- RECORDS SINGLE CAMERAS ON YOUR COMPUTER
- UP TO 640 X 480 RESOLUTION
- RECORDS IN MPEG4 FORMAT
- SOFTWARE CAN ALSO BE USED WITH ANY USB CAMERA

Converts any PC into a digital video recording system with remote viewing access.

EDV-XVAV



DigiVue® PCI Audio/Video Capture System

- PCI SLOT REQUIRED
- PLUG AND PLAY
- XVIEW TECHNOLOGY
- RECORDS IN MPEG4 FORMAT
- ACCEPTS OUTPUT FROM DVD, VCR, AND CAMCORDER
- VIDEO INPUT: RCA COMPOSITE, S-VIDEO
- AUDIO ADAPTER AND CABLE INCLUDED
- ALL SOFTWARE INCLUDED
- CONVERTS HOME VIDEOS INTO DVDS
- RECORDS TV PROGRAMS ON YOUR COMPUTER
- UP TO 720 X 480 RESOLUTION

EDV-AVSTK



DigiVue® USB Audio/Video Capture System

- USB 2.0 REQUIRED
- PLUG AND PLAY
- RECORDS IN MPEG4 FORMAT
- ACCEPTS OUTPUT FROM DVD, VCR, AND CAMCORDER
- VIDEO INPUT: RCA COMPOSITE, S-VIDEO
- AUDIO ADAPTER AND CABLE INCLUDED
- ALL SOFTWARE INCLUDED
- CONVERTS HOME VIDEOS INTO DVDS
- RECORDS TV PROGRAMS ON YOUR COMPUTER
- UP TO 720 X 480 RESOLUTION

EC-USBSE2



DigiVue® Web Server for 2 USB Cameras

- EASY INSTALLATION
- MONITOR MULTIPLE UNITS
- MOTION DETECTION RECORDING
- TIME SCHEDULE RECORDING
- E-MAIL NOTIFICATIONS
- MONITOR AND MANAGE MULTIPLE CAMERAS
- AUTO RESTART
- EVENT LOG
- DRAG AND DROP TO DESKTOP FEATURE
- SOFTWARE INCLUDED

An affordable solution to surveillance and security needs. This device allows you to stream live video images directly to the internet without a PC. Compact size: 2" x 2.5" x 1" and light weight: 2.75 oz. AC adapter included.

EC-PC-CAM



DigiVue® USB Color Camera

- 0 LUX SENSITIVITY
- 380 LINES RESOLUTION
- 6 BUILT-IN IR LED ILLUMINATORS
- USB POWERED
- INCLUDES BUNDLED SOFTWARE

Just connect this camera into your computer's USB port, install the included software, and you are ready to be seen on the web! Compatible with all USB camera applications.

ECDECAL3



Video Surveillance Decals

- SELF-ADHESIVE
- LARGE, HIGHLY VISIBLE 4" X 5" SIZE

ECDECAL1



Audio Monitoring Decals

- SELF-ADHESIVE
- LARGE, HIGHLY VISIBLE 4" X 5" SIZE



DigiVue® PCs To Go

POPULAR FEATURED, ASSEMBLED, CONFIGURED AND TESTED COMPUTER VIDEO SYSTEMS.

AVAILABLE MODELS ARE IN OUR PRICE LIST OR CONSULT YOUR DISTRIBUTOR FOR AVAILABILITY

ECDVR4-WEB



4 Channel Digital Video Recorder with Ethernet

- WAVELET COMPRESSION FORMAT
- REMOTE CONTROL AND LIVE VIEWING OVER THE INTERNET
- 4 VIDEO AND 4 AUDIO INPUTS / 2 AUDIO OUTPUTS
- 720 X 480 RESOLUTION
- MOTION TRIGGER RECORDING
- ALARM INPUT AND OUTPUT
- VIDEO LOSS DETECTION ON ALL CHANNELS
- 4X LINEAR ZOOM
- SINGLE REMOVABLE HDD, IDE TYPE
- SECURITY PASSWORD PROTECTION
- FAST/SLOW FORWARD AND REVERSE SEARCHING

ECDVR16-WEB



16 Channel Digital Video Recorder with Ethernet

- WAVELET COMPRESSION FORMAT
- REMOTE CONTROL AND LIVE VIEWING OVER THE INTERNET
- 16 CHANNEL VIDEO INPUTS
- 4 AUDIO INPUTS / 2 AUDIO OUTPUTS
- 720 X 480 RESOLUTION
- MOTION TRIGGER RECORDING
- ALARM INPUT AND OUTPUT
- VIDEO LOSS DETECTION ON ALL CHANNELS
- 4X LINEAR ZOOM
- 2 REMOVABLE HDDS, IDE TYPE
- SECURITY PASSWORD PROTECTION
- FAST/SLOW FORWARD AND REVERSE SEARCHING



IDE Hard Disc Drives

- | | | | |
|------------|-----------------|--|--|
| • ECTRAY1 | DRIVE TRAY | PERMITS FAST SWITCHING OR REPLACEMENT OF HARD DRIVES | |
| • ECHDD120 | 120GB IDE DRIVE | 1 PER ECDVR4
1 OR 2 PER ECDVR16 | 120GB = UP TO 2400 HRS
240GB = UP TO 4800 HRS |

EDVL-08



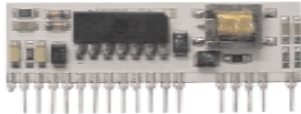
DigiVue® Digital Voice Logger Telephone Recording System

INCLUDED SOFTWARE:

- 8 & 16 CHANNEL RECORDING SYSTEMS
- RECORD EXTENSIONS & CO LINES
- VOICE ACTIVATED RECORDING FOR MICROPHONES (REQUIRES PROFESSIONAL SOFTWARE)
- DIGITALLY RECORD 8 CHANNELS PER CARD - 16 CHANNELS WITH BASIC SOFTWARE AND UP TO 128 CHANNELS WITH PROFESSIONAL KEY AND ADDITIONAL CARDS
- LINE MONITORING THROUGH MAIN COMPUTER
- EASY PLAYBACK CONTROLS
- WAV FILE BACKUP

DigiVue's Voice Logging System with an 8 channel PCI card and basic software

EDVL-LM-VAGC DigiVue® Voice Logger Detector



- 2M OHM REC LINE VOLTAGE DETECT, AGC
- FOR RECORDING CO LINES, EXTENSIONS, HANDSETS, AND MICROPHONES (WITH PROFESSIONAL SOFTWARE)

EDVL-PS



DigiVue® Voice Logger Professional Software Key

ADDS THE FOLLOWING FEATURES:

- BACKUP AND FORMAT CONVERTERS
- MULTIPLE TYPE WAV FILE BACKUPS
- AUTOMATICALLY SCHEDULED BACKUPS
- EXPANDED SEARCH AND REPORT CAPABILITY
- EXPANDABLE UP TO 64 AND 128 CHANNELS
- REQUIRED FOR USE OF REMOTE CLIENT SOFTWARE
- VOICE ACTIVATED RECORDING FOR MICROPHONES
- ONLY ONE INSTALLATION OF PROFESSIONAL SOFTWARE IS REQUIRED PER COMPUTER FOR ANY NUMBER VOICE LOGGER CARDS INSTALLED
- LINE MONITORING OVER THE INTERNET AND INTERNET RECORDS ACCESS
- WEEKLY SCHEDULING SETUP BY DAYS AND HOURS FOR EACH CHANNEL (LINE MONITOR & INTERNET ACCESS REQUIRE USE OF REMOTE CLIENT KEY)
- 1 KEY REQUIRED PER SYSTEM / 1 KEY REQUIRED FOR EACH CLIENT

EDVL-CS



DigiVue® Voice Logger Remote Client Software Key

- REMOTE TELEPHONE SEARCH
- LINE MONITORING OVER THE INTERNET
- INTERNET ACCESS TO REVIEW RECORDS
- REQUIRES INSTALLATION OF PROFESSIONAL SOFTWARE
- 1 KEY REQUIRED PER CLIENT

ECMIC1



Microphone Module With Pre-Amp

- VOLTAGE - 8-16VDC
- OUTPUT IMPEDENCE - 47K OHMS
- OUTPUT SENSITIVITY - 60DB~-3DB
- FREQUENCY RESP. - 100HZ - 1,000Hz

Add audio to any line level Input: mixers, power Amps, PCs, DVRs, VCRs, etc.

ECDECAL2



Telephone Monitoring Decals

- SELF-ADHESIVE
- FITS ON THE RECEIVER OF MOST PHONES

ECDECAL4



Telephone Monitoring Decals

- SELF-ADHESIVE
- FITS ON THE RECEIVER OF MOST PHONES

ECDECAL1



Audio Monitoring Decals

- SELF-ADHESIVE
- LARGE, HIGHLY VISIBLE 4" X 5" SIZE

EVAS



Voice Activated Telephone Recorder

- COMPACT
 - NO TOOL INSTALLATION
 - BUILT-IN MICROPHONE & SPEAKER
 - AUTOMATIC MONITORING OF A SINGLE LINE
 - 4.8/2.4 SPEED ADJUSTMENT
- The EVAS is a voice activated cassette recorder capable of telephone or memo recording. Plug it into any modular telephone outlet and record all audio activity on the line. Includes automatic telephone recording adaptor, built-in microphone for memo recording, built-in speaker for review of tape as well as jacks for external microphone & earphone (not included).
- ALLOWS TIME DOUBLING ON A STANDARD CASSETTE

Vandal Resistant Domes

ECVD-401



B&W Dome Camera

- 3.6MM LENS
- 420 TV LINES
- INCLUDES MOUNTING PLATE

Shatter resistant polycarbonate dome.

ECVD-401IR



B&W Dome Camera with IR Illuminator

- 3.6MM LENS
- 420 TV LINES
- INCLUDES MOUNTING PLATE

Shatter resistant polycarbonate dome.

ECVD-421



B&W Dome with 2 Cameras

- 3.6MM LENS
- 420 TV LINES
- 180° FIELD OF VIEW
- INCLUDES MOUNTING PLATE

Two cameras mounted in the same shatter resistant polycarbonate dome.

ECVD-431



B&W Dome with 3 Cameras

- 3.6MM LENS
- 420 TV LINES
- 270° FIELD OF VIEW
- INCLUDES MOUNTING PLATE

Three cameras mounted in the same shatter resistant polycarbonate dome.

ECVD-403



B&W Dome Camera with Varifocal Lens

- 3.5-8MM VARIFOCAL LENS
- 480 TV LINES
- INCLUDES MOUNTING PLATE

Shatter resistant polycarbonate dome.

ECVD-501



Color Dome Camera

- 3.6MM LENS
- 420 TV LINES
- INCLUDES MOUNTING PLATE

Shatter resistant polycarbonate dome.

ECVD-501IR



Color Dome Camera with IR Illuminator

- 3.6MM LENS
- 420 TV LINES
- INCLUDES MOUNTING PLATE

Shatter resistant polycarbonate dome.

ECVD-521



Color Dome with 2 Cameras

- 3.6MM LENS
- 420 TV LINES
- 180° FIELD OF VIEW
- INCLUDES MOUNTING PLATE

Two cameras mounted in the same shatter resistant polycarbonate dome.

ECVD-531



Color Dome with 3 Cameras

- 3.6MM LENS
- 420 TV LINES
- 270° FIELD OF VIEW
- INCLUDES MOUNTING PLATE

Three cameras mounted in the same shatter resistant polycarbonate dome.

ECVD-502



Color Dome Camera with AI Varifocal Lens

- 4-9MM AI VARIFOCAAL LENS
- 420 TV LINES
- 1/3" CCD CHIP
- INCLUDES MOUNTING PLATE AND BRACKET

Shatter resistant polycarbonate dome.

ECVD-503



Color Dome Camera with AI Varifocal Lens

- 4-9MM AI VARIFOCAAL LENS
- IR SENSITIVE WITH BLC
- 420 TV LINES
- 1/3" CCD CHIP
- INCLUDES MOUNTING PLATE AND BRACKET

Shatter resistant polycarbonate dome.

ECVD-701



Color IP Dome Camera

- BUILT-IN SERVER
- CONNECTS DIRECTLY TO ANY NETWORK CONNECTION (RJ45)
- INCLUDES MOUNTING PLATE AND BRACKET

View over the internet without extra hardware. Shatter resistant polycarbonate dome. Power supply included.

ECVD-721



Color IP Dome with 2 Cameras

- BUILT-IN SERVER
- 270° FIELD OF VIEW
- CONNECTS DIRECTLY TO ANY NETWORK CONNECTION (RJ45)
- INCLUDES MOUNTING PLATE AND BRACKET

View over the internet without extra hardware. Two cameras mounted in the same shatter resistant polycarbonate dome. Power supply included.

ECVD-802



Color Pan/Tilt Dome Camera with AI Varifocal Lens

- 4-9MM AI VARIFOCAAL LENS
- IR SENSITIVE
- 420 TV LINES
- 1/3" CCD CHIP
- INCLUDES MOUNTING PLATE AND BRACKET

Shatter resistant polycarbonate dome.

AVAILABLE MID 2005

ECVD-IR20



Outdoor 20 Meter IR Illuminator

- INFRARED ILLUMINATOR ONLY DOES NOT INCLUDE CAMERA
- RANGE UP TO 20 METERS
- COMPACT SIZE: 2½" X 2"
- 12VDC / 200MA OPERATION

Provides infrared lighting for black and white and IR sensitive color cameras. Automatic dusk sensor turns IR on at night.

ECVD-302



Dome Enclosure with Wall Mount Bracket

- CONSISTS OF ECBV-01 AND ECVD-301
- INCLUDES CAMERA BRACKET

ECVD-301



Dome Ceiling Mount Housing

- INCLUDES CAMERA BRACKET

ECVB-01



Universal Wall Mount Bracket for Dome Camera

EC-624



Outdoor Color Day/Night Camera

- 1/4" CCD IMAGING CHIP
- 0.1 LUX SENSITIVITY / 6MM F2.0 LENS
- OVER 30' RANGE
- 420 LINES RESOLUTION
- BUILT-IN ELECTRONIC IRIS CONTROL
- 12VDC / 200MA OPERATION

This compact camera automatically switches from color to infrared sensitive black and white in low lighting conditions to provide a viewable image. With the included bracket, it is easily mountable indoors or out.

EC-667N



Outdoor Color Day/Night Camera

- 1/4" CCD IMAGING CHIP
- 0.1 LUX SENSITIVITY / 4MM LENS
- 420 LINES RESOLUTION
- BUILT-IN ELECTRONIC IRIS CONTROL
- OVER 30' RANGE
- 12VDC / 200MA OPERATION

This compact camera automatically switches from color to infrared-sensitive black and white in low lighting conditions to provide a viewable image. With the included sun-shade and bracket, it is easily mountable indoors or out.

EC-677N



Weatherproof Day/Night Color CCD Camera with Extended Infrared Range

- 1.0 LUX SENSITIVITY
- 420 LINES RESOLUTION
- OVER 45' INFRARED RANGE
- 12VDC / 200MA OPERATION
- STANDARD 6MM LENS
- 1/3" COLOR CCD IMAGE SENSOR

EC-687VF



Outdoor Color Day/Night Camera with Varifocal Lens

- 1/4" CCD IMAGING CHIP
- 45 LED ILLUMINATOR
- 420 LINES RESOLUTION
- 3.5-8MM MANUAL IRIS LENS
- 60' RANGE
- 12VDC / 200MA OPERATION

This compact camera automatically switches from color to infrared-sensitive black and white in low lighting conditions to provide a viewable image. With the included sun-shade and bracket, it is easily mountable indoors or out.

EC-697VF



Outdoor Color Day/Night Camera with Varifocal Lens

- 1/3" CCD IMAGING CHIP
- 56 LED ILLUMINATOR
- 480 LINES RESOLUTION
- 4-16MM AUTO IRIS LENS
- 80' RANGE
- 12VDC / 200MA OPERATION

This compact camera automatically switches from color to infrared-sensitive black and white in low lighting conditions to provide a viewable image. With the included sun-shade and bracket, it is easily mountable indoors or out.

EC-DN470



1/3" CCD High Resolution Indoor IR Sensitive Low or No Light* Color Day/Night Camera

- C/CS LENS MOUNT
- 470 LINES RESOLUTION
- ELECTRONIC IRIS CONTROL
- MANUAL OR AUTO-IRIS LENSES
- 1.0 LUX ILLUMINATION (WITH STANDARD LENSES)
- SWITCHES TO B&W IN LOW LIGHT
- 12V DC / 250 MA

This compact 12V D.C. camera provides high quality color images in normal light and can operate with the IR illumination built-in to our intelligent IR illuminated lens in order to continue to provide a clear B&W picture even in severely reduced lighting conditions. Designed to accept interchangeable CS screw-in mount lenses.

* When used with one of our intelligent illuminated lenses.

EC-575N



1/4" Color CCD Camera

- 1.0 LUX SENSITIVITY
- 420 LINES RESOLUTION
- LONG-LIFE 1/4" CCD CHIP
- 12V DC / 200 MA

This compact 12V A.C. camera provides reliable performance without a high price. It is designed to accept interchangeable CS screw-in mount lenses.

EC-579N



1/3" High Resolution CCD Color Camera

- 2.0 LUX SENSITIVITY
- 480 LINES RESOLUTION
- BACKLIGHT COMPENSATION
- BUILT-IN ELECTRONIC IRIS
- USES MANUAL OR AUTO-IRIS LENSES
- 24V AC / 150 MA

Don't let the cost of high resolution color keep you in B&W; this compact 24V A.C camera provides high resolution color without a high price. Designed to accept interchangeable C/CS screw-in mount lenses.

EC-5172



1/3" Mini Color CCD Camera

- 12VDC / 200 MA
- 1.0 LUX SENSITIVITY
- 420 LINES RESOLUTION
- VIDEO / DC AUTO-IRIS (AUTO SWITCHING)
- BACKLIGHT COMPENSATION (SWITCHABLE)



DC Auto-Iris, CS Mount, Manual Zoom

- | | |
|------------|--------------------------|
| EC-V2812DC | • 2.8 - 12MM, F1.4, 4.2X |
| EC-V3314DC | • 3.3 - 8MM, F1.4, 2.3X |
| EC-V0616DC | • 6 - 60MM, F1.6, 10X |



Manual Iris, CS Mount, Manual Zoom

- | | |
|----------|--------------------------|
| EC-V2812 | • 2.8 - 12MM, F1.4, 4.2X |
| EC-V3314 | • 3.3 - 8MM, F1.4, 2.3X |



No Iris, CS Mount, Manual Zoom

- | | |
|------------|-------------------------|
| EC-V3314NI | • 3.3 - 8MM, F1.4, 2.3X |
|------------|-------------------------|



Intelligent IR Illuminated Day/Night Lenses

- | | | |
|----------|------------|---------------|
| EC-831/4 | 4mm / f2.0 | CS LENS MOUNT |
| EC-831/6 | 6mm / f2.0 | |

EC-592



Color Mini Dome Camera

- 1/4" CCD IMAGING CHIP
- 0.1 LUX SENSITIVITY
- 380 LINES RESOLUTION
- BUILT-IN ELECTRONIC IRIS CONTROL
- 12VDC / 100MA OPERATION

This compact camera is housed in a clear dome. It surface mounts to walls or ceilings. Its small size (only 2.9" X 3.4") and neat appearance make this camera ideal for stores, schools, offices, etc.

EC-302E



Black and White Mini Dome Camera

- 1/3" CCD IMAGING CHIP
- 0.18 LUX SENSITIVITY
- 420 LINES RESOLUTION
- BUILT-IN ELECTRONIC IRIS CONTROL
- 12VDC / 100MA OPERATION

This compact camera is housed in a clear dome. It surface mounts to walls or ceilings. Its small size (only 2.5" X 4.25") and neat appearance make this camera ideal for stores, schools, offices, etc.

EC-682HR



High Resolution Color Mini Dome CCD Camera

- AGC, AWB, AES
- 3.6MM F 2.0 LENS
- 1.0 LUX / 430 LINES RESOLUTION
- 12VDC / 100MA OPERATION
- 1/3" HIGH RES. CCD SENSOR

This compact, 12V D.C. dome camera surface mounts on wall or ceiling. (3.2"H X 3.4" dia.)!

EC-594P



Super-Mini Color Camera with Pinhole Lens

- 1/4" CCD IMAGING CHIP
- 1.0 LUX SENSITIVITY
- 380 LINES RESOLUTION
- BUILT-IN ELECTRONIC IRIS
- 12VDC / 100MA OPERATION

This tiny, easily concealed camera goes where others can't. Its pinhole lens needs only a 1/8" hole to view through. Only slightly larger than a postage stamp (1.1" X 1." X 1/2") enables mounting virtually anywhere.

EOL-240P



1/3" Super-Mini B&W CCD Camera with Built-In Pinhole Lens and Bracket

- 0.05 LUX SENSITIVITY
- 420 LINES RESOLUTION
- BUILT-IN ELECTRONIC IRIS
- 12VDC / 100MA OPERATION

This tiny, easily concealed 12V D.C. camera goes where others can't fit. Pinhole lens needs only 1/8" hole to view through. Only slightly larger than a postage stamp (1/4" x 1/4" x 1/2")

EC-594N



Super-Mini Color Camera with 3.6mm Lens

- 1/4" CCD IMAGING CHIP
- 0.9 LUX SENSITIVITY
- 420 LINES RESOLUTION
- BUILT-IN ELECTRONIC IRIS
- 12VDC / 100MA OPERATION

This tiny, easily concealed camera goes where others can't. Only slightly larger than a postage stamp (1 3/8" X 1 3/8" X 7/8") enables mounting virtually anywhere.

EC-304E



1/3" Super-Mini B&W CCD Camera with Built-In Standard 3.6mm Lens and Bracket

- 0.05 LUX SENSITIVITY
- 420 LINES RESOLUTION
- BUILT-IN ELECTRONIC IRIS
- 12VDC / 100MA OPERATION

This tiny, easily concealed 12V D.C. camera goes where others can't fit. Only slightly larger than a postage stamp (1/4" x 1/4" x 3/4").

EC-597



Mini Weatherproof Digital Color Camera

- 1/4" CCD IMAGING CHIP
- 3.6MM F 2.0 LENS
- 2.0 LUX SENSITIVITY / 420 LINES RESOLUTION
- BUILT-IN ELECTRONICS IRIS
- 12VDC / 140MA OPERATION

This miniature weatherproof camera can mount outdoors without the need of an additional housing or cover. Perfect for any outdoor or wet area application. All this in a compact size (3 1/8" X 7/8").

EC-307



Weatherproof Lipstick 1/3" B&W CCD Camera with Built-In Lens and Bracket

- 0.5 LUX SENSITIVITY
- 380 LINES RESOLUTION
- BUILT-IN ELECTRONIC IRIS
- 12VDC / 140MA OPERATION

This compact, cylindrical 12V D.C. camera mounts outdoors with no additional housing required. Great door or garage camera (3.4" x 1" dia.).

EOL-2000WP



Weatherproof Lipstick 1/3" B&W CCD Camera with Built-In Lens, IR Illuminator & Bracket

- 0 LUX SENSITIVITY
- 380 LINES RESOLUTION
- BUILT-IN ELECTRONIC IRIS
- 12VDC / 150MA MAXIMUM WITH LEDS OFF
/ 240MA MAXIMUM WITH LEDS ON

This compact, cylindrical 12V D.C. camera mounts outdoors with no additional housing required and can "see" in total darkness. Great for door or garage. Only about as big as a film can (2" x 1 1/2" dia.)!

ECMD-01



Micro Dome Color Camera

- CLEAR DOME
- CMOS IMAGING CHIP
- 1.5 CMOS IMAGING CHIP
- 380 LINES RESOLUTION
- 12VDC / 100MA OPERATION
- SWIVEL AND PIVOTING CAMERA MOUNT INCLUDED

This miniature dome camera mounts on the wall or ceiling. It's contemporary styling and small size (2" X 2 1/4") makes it ideal for offices and other public spaces.

ECMP-02



Ultra-Micro Color Camera with Pinhole Lens

- CMOS IMAGING CHIP
- 1.5 CMOS IMAGING CHIP
- 380 LINES RESOLUTION
- 12VDC / 100MA OPERATION

This tiny camera is small enough to mount anywhere. Its small size (5/8" X 5/8" X 5/8") makes it easy to conceal.

ECMP-04



Micro Color Camera with Pinhole Lens

- CMOS IMAGING CHIP
- 1.5 CMOS IMAGING CHIP
- 380 LINES RESOLUTION
- 12VDC / 100MA OPERATION
- MOUNTING BRACKET INCLUDED

This economical miniature camera has an unobtrusive shape and small size (1" X 1" X 5/8") making it ideal for well lit areas where color imaging is desired and cost is a limitation.

ECMS-06



Micro Color Camera with 3.6mm Lens

- SILVER FINISH
- CMOS IMAGING CHIP
- 1.5 CMOS IMAGING CHIP
- 380 LINES RESOLUTION
- 12VDC / 100MA OPERATION
- MOUNTING BRACKET INCLUDED

This economical miniature camera has an unobtrusive shape and small size (1 1/2" X 1" X 1 1/4") making it perfectly suited for a wide range of applications.

ECMC-07



Micro Color Camera with Pinhole Lens

- BLACK CHROME FINISH
- CMOS IMAGING CHIP
- 1.5 CMOS IMAGING CHIP
- 380 LINES RESOLUTION
- 12VDC / 100MA OPERATION
- MOUNTING BRACKET INCLUDED

This economical miniature camera has an unobtrusive shape and small size (1" X 1 1/4" X 5/8") making it ideal for well lit areas where color imaging is desired and cost is a limitation. Its attractive modern styling compliments contemporary decor.



Optional Standard Optic Mini Camera Lenses

EC-ML29	2.9mm
EC-ML36	3.6mm
EC-ML6	6mm
EC-ML8	8mm
EC-ML12	12mm

Threaded mount will replace lens on any non-pinhole mini camera shown.

ESMA-012



Miniature Automatic Indoor Scanner with Remote Control

- 12VAC OPERATION
- TILT ADJUSTABLE CAMERA PLATFORM

- ONLY 2 1/2" X 2 1/2" X 2 1/2" WITHOUT WALL BRACKET
- SELECTABLE SCAN ANGLE W/ EASY SET PRESET TABS

EOL-062C



Color Wide Angle Doorscope Peep-Hole Replacement Camera

- 170° FIELD OF VIEW
- 0.05 LUX SENSITIVITY
- BUILT-IN ELECTRONIC IRIS

This 12V D.C. camera mounts right through most doors to replace the average peep-hole. Threaded body adjusts for door thickness.

EC-802E



Mini Concealed B&W Pinhole Camera in Working Motion Detector

- 0.5 LUX SENSITIVITY
- 380 LINES RESOLUTION
- N.O. & N.C. RELAY OUTPUTS

This working PIR with 33' range conceals a 12V D.C. camera with 90° field of view and uses a 1/3" Samsung CCD image sensor chip.

EC-829N



Mini Concealed COLOR Pinhole Camera in Working Motion Detector

- 2 LUX SENSITIVITY
- 330 LINES RESOLUTION
- N.O. & N.C. RELAY OUTPUTS

This working PIR with 33' range conceals a 12V D.C. camera with 70° field of view and uses a 1/4" CCD image sensor chip.

Monitors and Modulators

ECM-14C



14" High Resolution Color CCTV Monitor with Audio

- STEEL CABINET
- 3 WATTS AUDIO POWER
- 450 LINES RESOLUTION
- AUDIO LOOP THROUGH (RCA)
- SVHS & BNC INPUT & OUTPUT
- VIDEO LOOP THROUGH (BNC & SVHS)
- DIMENSIONS: 14.4" W X 13.5" W X 12.6" H

ECM-21C



21" High Resolution Color CCTV Monitor with Audio

- STEEL CABINET
- 3 WATTS AUDIO POWER
- AUDIO LOOP THROUGH (RCA)
- UP TO 580 LINES RESOLUTION
- SVHS & BNC INPUT & OUTPUT
- VIDEO LOOP THROUGH (BNC & SVHS)
- DIMENSIONS: 19.7" W X 19.3" W X 18.1" H

MOD-1000



Frequency Agile, Single Input RF Modulator

- DIGITAL TUNING
- RETAINS CHANNEL MEMORY THROUGH POWER FAILURE

The MOD-1000 is a digitally tuned, user programmable, frequency agile RF modulator capable of converting any Video source (CCTV camera, VCR output, DSS receiver, DVD, etc.) to a modulated signal on any unused cable channel (65-94 & 104-135).

MOD-1-IRST



Stereo RF Modulator, Frequency Agile with Single Input

- IR CONTROL FEED THRU
- MODULATES TO TV CHANNELS (14-79) OR CABLE CHANNELS (65-135)
- ANTENNA INPUT

True Stereo

MOD 4000



Frequency Agile Four Input RF Modulator

- STEREO AUDIO INPUT
- SIMPLE USER FRIENDLY PROGRAMMING

The MOD 4000 is a digitally tuned, user programmable, frequency agile RF modulator capable of converting any 4 video sources (CCTV camera, VCR, DSS receiver, DVD, etc.) to modulated signals on an unused UHF (14-68) or CATV (65-94 & 104-135) channels.

EC-604A



4 Camera Sequential Switcher with Audio

- CAMERA BYPASS
- PASSES COLOR AND B&W VIDEO
- ADJUSTABLE DWELL TIME
- SINGLE CAMERA SELECTION
- 110V AC

EC-608A



8 Camera Sequential Switcher with Audio

- CAMERA BYPASS
- PASSES COLOR AND B&W VIDEO
- ADJUSTABLE DWELL TIME
- SINGLE CAMERA SELECTION
- 110V AC

EC-201



Single Channel Video Amplifier With Gain Control

- MAINTAIN VIDEO SIGNAL OVER LONG CABLE RUNS
- ADJUSTABLE GAIN (MAX. 12DB)
- 1 INPUT / 1 OUTPUT
- 110V AC

EC-208A



8 Channel A/V Distribution Amplifier

- MAINTAIN AUDIO/VIDEO SIGNAL LEVEL TO UP TO 8 LOCATIONS
- 1 INPUT / 8 OUTPUTS
- 110V AC

EC-713



Real-Time Black & White Quad

- FREEZE FRAME
- ON SCREEN DISPLAY
- DUAL VIDEO OUTPUTS
- SEQUENTIAL SWITCHER FUNCTION
- INDIVIDUAL INPUT GAIN ADJUSTMENTS
- SINGLE CAMERA CALL UP TO FULL SCREEN

Display up to 4 cameras on the same monitor at the same time or sequentially displayed one after another.

EC-703N



Real-Time Color Quad

- FREEZE FRAME
- ON SCREEN DISPLAY
- DUAL VIDEO OUTPUTS
- SEQUENTIAL SWITCHER FUNCTION
- INDIVIDUAL INPUT GAIN ADJUSTMENTS
- SINGLE CAMERA CALL UP TO FULL SCREEN

Display up to 4 cameras on the same monitor at the same time or sequentially displayed one after another.

EC-707ND



16 Channel Full Duplex Color Multiplexer

- CAMERA TITLES
- FREEZE FRAME
- ZOOM FUNCTION
- S-VIDEO IN/OUT
- PICTURE-IN-PICTURE
- ALARM INPUT (TTL)
- ALARM RELAY OUTPUT
- 50 EVENT LOG ALARM
- VIDEO LOSS DETECTION
- DUAL MONITOR OUTPUTS
- 30 FPS REFRESH RATE
- PROGRAMMABLE MOTION DETECTION
- PROGRAMMABLE DYNAMIC RECORDING PRIORITY

This low profile unit permits the simultaneous recording and display of up to 16 color or black & white cameras on the same monitor and recorder. Blank RS232 connector supplied for alarm interface. Rack mountable with mounting tabs provided for standard 19" equipment racks and cabinets.

EPIV861-BP78



One Camera to One Monitor Twisted Pair Video Adapter

- ONE UNIT AT CAMERA, ONE UNIT AT MONITOR
- TRANSMITS B&W VIDEO SIGNAL 1,600FT (COLOR 800FT)
- RJ45 MODULAR JACK FOR CAT-5E CABLE CONNECTION
- SCREW TERMINALS FOR SINGLE TWISTED PAIR
- RJ45 JACK FOR CAT-5E PIGTAIL

One Camera To One Monitor Twisted Pair Video Adapter with Camera Power Capability



- EPIV880-BP78-AT (MONITOR SIDE WITH POWER INPUT)
EPIV880-BP78 (CAMERA SIDE WITH POWER OUTPUT)
- ONE UNIT AT CAMERA, ONE UNIT AT MONITOR
 - TRANSMITS B&W VIDEO SIGNAL 800FT (COLOR 600FT)
 - COLOR CODED PUSH-IN CAT-5E TERMINALS (1-6 FOR POWER, 7&8 FOR VIDEO SIGNAL)

Includes camera power jumper
Includes power attenuator for short runs
Camera power supply not included

EPS-



13 Camera Power Supply

- (9) 12 VOLT AND (4) 24 VOLT OUTPUTS
- AUTO THERMISTORS WITH 5 SECOND RESET
- L.E.D. INDICATORS FOR EACH FUSE

This sturdy, locking cabinet provides power for cameras and accessories without using individual power supplies. With this unit you can power your cameras, heaters, blowers and IR illuminators all from one central location.

EPS-12800



12V D.C. Switching Power Supply

- AUTO-SWITCHING 110/220 INPUT
- 12VDC / 800MA REGULATED OUTPUT
- CENTER POSITIVE, 2.1MM PLUG

This power supply will operate most 12V D.C cameras and accessories.

EPS-12050



12V D.C. Regulated Plug-In Power Supply for CCTV Cameras

- 500MA OUTPUT
- U.L. LISTED CLASS 2 TRANSFORMER
- 2.1MM PLUG (CENTER +)

Suitable for all Elyssa Corporation 12V D.C. cameras. Voltage regulated to protect delicate camera circuits.

ECT-2420



24V A.C. Plug-In Transformer for CCTV Cameras

- 20VA OUTPUT
- SCREW TERMINALS
- U.L. LISTED CLASS 2 TRANSFORMER

Suitable for all Elyssa Corporation 24V A.C. cameras.

EPC-21DC



2.1mm DC Power Supply Plug With Cord

- 6 FT CORD WITH DC PLUG TO BARE CABLE

ECVI-100S



Black and White Door Intercom System

SURFACE MOUNT CAMERA:

- 1/3" B&W CCD
- 92.8° ANGLE OF VIEW
- 0.3 LUX SENSITIVITY (F:2.0)
- OVER 400 LINES RESOLUTION
- BUILT-IN INFRARED ILLUMINATOR PERMITS NIGHT VIEWING

MONITOR:

- 4" TFT LCD SCREEN
- OVER 400 LINES RESOLUTION
- UP TO 4 MONITOR STATIONS PER SYSTEM
- CONNECTIONS FOR ELECTRIC DOOR LOCK

ECVI-100R



Black and White Door Intercom System

FLUSH MOUNT CAMERA:

- 1/3" B&W CCD
- 92.8° ANGLE OF VIEW
- 0.3 LUX SENSITIVITY (F:2.0)
- OVER 400 LINES RESOLUTION
- BUILT-IN INFRARED ILLUMINATOR PERMITS NIGHT VIEWING

MONITOR:

- 4" TFT LCD SCREEN
- OVER 400 LINES RESOLUTION
- UP TO 4 MONITOR STATIONS PER SYSTEM
- CONNECTIONS FOR ELECTRIC DOOR LOCK

ECVI-100MB



Black and White Door Intercom Monitor Station

MONITOR:

- 4" TFT LCD SCREEN
- OVER 400 LINES RESOLUTION
- UP TO 4 MONITOR STATIONS PER SYSTEM
- CONNECTIONS FOR ELECTRIC DOOR LOCK

Additional black and white monitor station for ECVI-100S or ECVI-100R. Maximum of 4 station monitors per system can be used.

ECVI-200SC



Color Door Intercom System

SURFACE MOUNT CAMERA:

- SONY COLOR CCD
- 92.8° ANGLE OF VIEW
- 0.3 LUX SENSITIVITY (F:2.0)
- OVER 400 LINES RESOLUTION
- BUILT-IN BLUE-WHITE ILLUMINATOR PERMITS COLOR NIGHT VIEWING

MONITOR:

- 4" TFT LCD SCREEN
- OVER 400 LINES RESOLUTION
- UP TO 4 MONITOR STATIONS PER SYSTEM
- CONNECTIONS FOR ELECTRIC DOOR LOCK

ECVI-200MC



Color Door Intercom Monitor Station

MONITOR:

- 4" TFT LCD SCREEN
- OVER 400 LINES RESOLUTION
- UP TO 4 MONITOR STATIONS PER SYSTEM
- CONNECTIONS FOR ELECTRIC DOOR LOCK

Additional color monitor station for ECVI-200SC. Maximum of 4 station monitors per system can be used.

ECA-345



Apartment Intercom Amplifier

This intercom amplifier is a self-contained unit not requiring an external amplifier. It is designed for use with our ECI-345 or with most 3, 4, or 5 wire type stations. It will provide amplification control and the power circuits needed to operate a complete apartment intercom system. Voice and tone volume are easily adjustable as well. Output for door lock included.

ECI-345



3, 4 or 5 Wire Intercom Station

This versatile intercom station can be used in new and to replace existing installations using 3, 4 or 5 wire systems. With it's universal mounting holes, the ECI-345 will align perfectly when replacing most existing surface mount and flush mount intercom stations.

ABS-



U.S. PATENT# 6130610

Universal Security System

- PASSIVE INFRARED DETECTOR
- HEAVY GAUGE STEEL CABINET
- WEIGHT (WITHOUT BATTERY): 11 LBS.
- DIMENSIONS: 9"W X 9"D X 7-1/4"H
- 115DB SIREN (2MIN. CUT-OFF/RESET)
- 2 KEY-CHAIN STYLE REMOTE CONTROLS
- OPERATING TEMPERATURE: -10° TO 110° F
- CHARGER FOR OPTIONAL BATTERY BACK-UP
- CURRENT CONSUMPTION IN ARMED MODE: 70MA
- CEILING OR WALL MOUNTABLE WITH SUPPLIED BRACKETS

The ABS-1000+ Security System is a self-contained system which is comprised of a control panel, motion sensing device and a 115dB siren, all built inside an easy to mount steel cabinet. Two remote controls are provided for easy arming and disarming of the system. Knock-outs are also provided for electrical conduit entry; and a plug-in DC power supply is included. There is also a separate compartment for an optional rechargeable back-up battery.

Not only can the ABS-1000+ be used as a stand-alone system, but input terminals are provided to wire optional window and door switches, remote motion sensing devices, or temperature alert sensors, etc. 12 volt D.C. power is also provided to power these devices. An output is also provided with an on board relay giving you a 5 amp N.O. / N.C. dry contact activated when the unit is triggered. This can be used to trigger a dialer, a remote siren, central security system, etc. Terminals are provided for adding a remote on/off key switch and remote LED "armed indicator"

RA-02



Universal Security System 2 Button Transmitter

- UP TO 50' RANGE
- EASY CODE SETTING

The RA-02 is a 2-button RF transmitter designed for use with the ABS-1000+.

ECTD-101



Programmable Automatic Phone Dialer

- EASY TO PROGRAM
- EASY TO INSTALL
- STANDALONE OPERATION OR ALARM ACTIVATION
- RELIABLE - FULLY DIGITAL - NO TAPES TO JAM OR WEAR OUT
- SINGLE OR DUAL CHANNEL OPERATION
- SUPPORTS VOICE MESSAGING
- PRE-PROGRAMMED POPULAR CENTRAL STATION PROTOCOLS

The ECTD-101 phone dialer connects to any alarm & is capable of sending two 10 second, or one 20 second, digital message to 4 separate phone numbers and two pager numbers as well as two central station numbers. It is small enough to fit inside most existing alarm cabinets. Separately programmable trigger inputs (N.O., N.C.).

ERGD-1



Wall Mount Motion Detector with Steel Faceplate

- STURDY
- DUAL ELEMENT
- BUILT-IN 3-30 SECOND TIMER
- HEAVY DUTY 5A CONTACTS
- FLEXIBLE INSTALLATION
- WIDE RANGE OF APPLICATION
- 12V / 24V AC/DC OPERATION

Truly the "Rugged One." It is ideal for stock areas, loading docks, warehouses, or anywhere a PIR might take a beating. The ERGD-1 motion detector is a flush mount (on standard 1900 wall box) or surface mount (with included multi-angle back box), quad element, passive infrared unit with a sturdy steel faceplate. A built-in 3-30 sec. timer, 5a N.O./N.C. relay, & 12/24 VAC/DC power make this unit suitable for applications from annunciation, to lighting control, to alarm trigger.

EWC-2



2-Channel Wireless Receiver

- UNIVERSAL OPERATION
- LONG RECEIVING RANGE
- EASY TRANSMITTER SETTING
- MOMENTARY, TIMED AND RATCHET RELAY MODES
- 12V / 24V AC/DC OPERATION
- HEAVY DUTY 5A CONTACTS

Control any two low voltage operations from a convenient, pocket sized remote. The EWC-2 is a 2-channel RF receiver designed for a wide range of applications. 2-channel operation permits control of 2 devices through separate 5A N.O./N.C. relay contacts, 1-60 sec./min timer & built-in ratchet relay with LED and piezo indicators for each channel. Power may be obtained from a 12 or 24 volt AC or DC source, and a built-in battery charger and connections for a 12 VDC backup battery are provided. Also provided is a fused 500mA power supply for auxiliary devices.

RA-03



Wireless Receiver 2 Button Transmitter

- EASY DIP SWITCH CODE SETTING

The RA-03 is a 2-button RF transmitter designed for use with the EWC-2.

EC-PRK1



3-In-1 Entry Control

- ENTRY BY TAG, CODE, OR BOTH
- TAMPER SWITCH
- SELECTIVE USER DELETE
- OPERATES ALL TYPES OF DOOR STRIKES OR MAGNETIC LOCKS
- 255 USERS
- 3 AMP DRY CONTACT TRANSFER UPON ACTIVATION

The EC-PRK1 is a proximity tag reader, keypad and doorbell switch all built into one unit. It is easy to program and is in a clean, low profile housing. Included are 10 key fob tags.

EC-PT10



Additional Key Fob Proximity Tags

- PACKAGE OF 10 UNITS

EC-MAG900KT



Door Handle Mount Electromagnetic Lock Kit

- 12 OR 24V DC POWER
- 2-WIRE OPERATION
- 600 LBS. HOLDING FORCE
- KIT INCLUDES HANDLE, LOCK, PUSHBUTTON KEY SWITCH PLATE AND HARDWARE
- CENTRAL DOOR MOUNTING PROVIDES TREMENDOUS LOCKING LEVERAGE

The EC-MAG900KT electromagnetic lock is a locking device concealed in an attractive brushed aluminum door pull. Designed for doors where an obvious locking device would be out of place, or unattractive. Perfect for professional offices, showrooms, or anywhere more subtle security is preferred.

EC-MAG900/M



Flush Mounting Electromagnetic Lock

- 2-WIRE OPERATION
- 12 OR 24V DC POWER
- 600 LBS. HOLDING FORCE
- REQUIRES 8 1/2" X 1 9/16" OPENING

The EC-MAG900/M electromagnetic lock is a recessed locking device designed for mortised installation in the door frame. Providing maximum security on doors inconspicuously.

EC-MAG1200



Electromagnetic Lock For Outswinging Doors

- 2-WIRE OPERATION
- 12 OR 24VDC POWER
- BUILT-IN RELEASE TIMER
- 1,200 LBS. HOLDING FORCE
- DIMENSIONS: 10 1/2" X 1 5/8" X 2 5/8"

The EC-MAG1200 electromagnetic lock is a top jamb mount locking device designed for doors that open outward (an optional Z-bracket permits use with inswinging doors). Electromagnetic locks provide maximum security on doors that require frequent opening or where mechanical locks are undesirable due to dust or similar conditions that promote jams or excessive wear.

EC-ZB1200



Z-Bracket Kit For Inswinging Door

- ADAPTABLE 3-PIECE CONSTRUCTION

The EC-ZB1200 optional Z-bracket kit permits use of the EC-MAG1200 lock with in-swinging doors.

EC-MM300



Ultra Compact Electromagnetic Lock for Outswinging Doors

- ONLY 1.5" X 6.5" X 7/8"
- 12 VDC POWER
- 2-WIRE OPERATION
- 300 LBS. HOLDING FORCE

The EC-MM300 electromagnetic lock is an extremely compact top jamb mount locking device designed for doors that open outward. Its compact size makes it perfect for cabinets, tool bins, storage closets, compartments and many other applications.



Mullion Mount Push-Button Switch Plates

PUSH TO EXIT:

- ECPB20L LONG PLATE
7" X 1 11/16"
- ECPB20S SHORT PLATE
5 13/16" X 1 13/16"

BLANK:

- ECPB20SB SHORT PLATE
5 13/16" X 1 13/16"

- PROVIDES EGRESS FROM AREAS PROTECTED WITH ELECTRIC STRIKES OR ELECTROMAGNETIC LOCKS
- HEAVY GAUGE SOLID ALUMINUM CONSTRUCTION
- NORMALLY OPEN & NORMALLY CLOSED CONTACTS PROVIDED



Mullion Mount Key Switch Plates

- ECKS40L LONG PLATE
7" X 1 11/16"
- ECKS40S SHORT PLATE
5 13/16" X 1 13/16"
- FITS STANDARD MORTISE CYLINDER
- LOCK CYLINDER NOT INCLUDED
- PROVIDES OUTSIDE ENTRY TO AREAS PROTECTED WITH ELECTRIC STRIKES OR ELECTROMAGNETIC LOCKS
- HEAVY GAUGE SOLID ALUMINUM CONSTRUCTION
- NORMALLY OPEN & NORMALLY CLOSED CONTACTS PROVIDED

EC-DS412



Universal Door Strike

- 12-16VAC / 12 VDC POWER
- MOST POPULAR PROFILE FOR WOOD OR METAL FRAMES
- CORROSION RESISTANT STAINLESS STEEL CONSTRUCTION
- FAIL SECURE OPERATION (REMAINS LOCKED WITH POWER OFF)
- SILENT OPERATION (DC POWER), OR BUZZER WHEN OPEN (AC POWER)
- IN-FRAME MOUNTING TABS INCLUDED



Door Lock Timers with On-Board Piezo Sounder

- ET-01
- ET-01MT (WITH MOUNTING HOLES)
- 12-24VAC/VDC POWER
- BUILT-IN PIEZO SOUNDER
- ADJUSTABLE TIMING INTERVAL
- VOLTAGE OR DRY CONTACT TRIGGER
- N.O./N.C. 2 AMP RELAY & VOLTAGE OUTPUTS
- ADHESIVE MOUNTING STRIPS

ET-02



Universal Timer

- 12-24VAC/VDC POWER
- HEAVY DUTY 8 AMP / 250 VAC CONTACTS
- ADJUSTABLE TIMING INTERVALS -
1-60 SECONDS
1-60 MINUTES
- DUAL N.O./N.C. RELAY OUTPUTS
- ADHESIVE MOUNTING STRIPS
- MULTI TIMING MODES -
DELAY ON OPERATE, ONE SHOT MODE,
DELAY TRIGGER CYCLE AND DELAY TRIGGER
- VOLTAGE OR SWITCHED INPUT TRIGGERS
- LED INDICATORS

ERM-01



Universal Relay

- 12 OR 24VAC/VDC POWER
- HEAVY DUTY 8 AMP / 250 VAC CONTACTS
- LOW CURRENT (35MA) INPUT TRIGGER
- DUAL N.O./N.C. RELAY OUTPUTS
- ADHESIVE MOUNTING STRIPS

ECMA- 20



20dB Broadband In-Line RF Amplifier

- SUPER CLEAN OUTPUT
- FREQUENCY RANGE: 20MHZ TO 1GHZ FOR UHF/VHF/FM/CATV
- COAXIAL POWER CONNECTION FOR LONG NOISE FREE RUNS

The ECMA-20 is a two part in-line RF amplifier for all TV applications. The amplifier section is weatherproof for outdoor applications. High (20dB) gain & exceptionally clean operation makes it ideal for most small to medium antenna/cable systems.

Krystal Klear



High Quality 5 - 1,000 MHz. Indoor/Outdoor Signal Splitters

- ES-2 2-WAY SIGNAL SPLITTER
- ES-3 3-WAY SIGNAL SPLITTER
- ES-4 4-WAY SIGNAL SPLITTER
- ES-6 6-WAY SIGNAL SPLITTER
- ES-8 8-WAY SIGNAL SPLITTER

- DUAL GROUND BLOCKS BUILT-IN
- NICKEL PLATED DIE CAST ZINC HOUSING
- DC PASSIVE (UP TO 24V/1A) TO ALL PORTS
- ALL PORTS 75 OHM FEMALE "F" CONNECTOR



F-F MATV & CATV Hook-Up Cables

• ALL AVAILABLE IN BLACK OR WHITE

RG59/U CABLE:

- EFC-503 3 FEET
- EFC-506 6 FEET
- EFC-512 12 FEET
- EFC-525 25 FEET
- EFC-550 50 FEET
- EFC-510 100 FEET

RG6/U CABLE:

- EFC-603 3 FEET
- EFC-606 6 FEET
- EFC-612 12 FEET
- EFC-625 25 FEET
- EFC-650 50 FEET
- EFC-675 75 FEET
- EFC-610 100 FEET



BNC-BNC CCTV & HDTV Hook-Up Cables

- EBC-503 3 FEET
- EBC-506 6 FEET
- EBC-512 12 FEET

- EBC-525 25 FEET
- EBC-550 50 FEET
- EBC-510 100 FEET

Coaxial Cable Connectors

"F" CONNECTORS WITH ATTACHED CRIMP RINGS

- EC-F56AL LONG NECK FOR RG-6/U
- EC-F56ALQTPB TIN PLATE BRASS LONG NECK FOR RG-6/U QUAD
- EC-F56ALTPB TIN PLATE BRASS LONG NECK FOR RG-6/U
- EC-F56WP WATER-PROOF LONG NECK FOR RG-6/U
- EC-F59AL LONG NECK FOR RG-59/U
- EC-F59ALTPB TIN PLATE BRASS LONG NECK FOR RG-59/U

MALE TWIST-ON "F" CONNECTORS

- EC-1107 RG-6U
- EC-1108 RG-59U

MALE TWIST-ON BNC CONNECTORS

- EC-1000 RG-6U
- EC-1004 RG-59U

MALE 2-PIECE BNC CONNECTORS

- EC-1015 RG-6U
- EC-1019 RG-59U



Coaxial Cable Adaptors

- EC-1055 "F" FEMALE TO BNC MALE ADAPTOR
- EC-1057 RCA FEMALE TO BNC MALE ADAPTOR
- EC-1058 BNC FEMALE TO RCA MALE ADAPTOR
- EC-1059 BNC TO BNC FEMALE UNION
- EC-1061 (1) BNC FEMALE TO (2) BNC FEMALE "TEE"
- EC-1063 (1) BNC MALE TO (2) BNC FEMALE "TEE"
- EC-1122 "F" TO "F" FEMALE UNION
- EC-1126 "F" SCREW-ON TO "F" PUSH-ON ADAPTOR
- EC-1131 "F" FEMALE TO RCA MALE ADAPTOR



Krystal Klear Premium Oxygen Free Audio/Video Cables

Krystal Klear audio cables are made to perform. They are made of highly flexible, kink free cable with large deeply knurled connectors with gold plated contact points. Oxygen free, corrosion resistant wire and premium shielding combine for long term noise free operation. These A/V cables give the highest performance for dubbing or component hook-up in consumer, CCTV, or commercial applications.

2 CONDUCTOR COMPOSITE CABLES

- KK2-RAV1.5 1.5 FEET
- KK2-RAV03 3 FEET
- KK2-RAV06 6 FEET
- KK2-RAV12 12 FEET
- KK2-RAV20 20 FEET



3 CONDUCTOR COMPOSITE CABLES

- KK3-RAV03 3 FEET
- KK3-RAV06 6 FEET
- KK3-RAV12 12 FEET
- KK3-RAV25 25 FEET
- KK3-RAV50 50 FEET

RGB COMPONENT CABLES

- KK-RGB-06 6 FEET
- KK-RGB-12 12 FEET
- KK-RGB-25 25 FEET



RGB COMPONENT CABLES WITH STEREO AUDIO

- KK-RGB-A06 6 FEET
- KK-RGB-A12 12 FEET
- KK-RGB-A25 25 FEET

S-VIDEO CABLES WITH STEREO AUDIO

- KK-SVA-A03 3 FEET
- KK-SVA-A06 6 FEET
- KK-SVA-A12 12 FEET
- KK-SVA-A25 25 FEET

EPT-6877



Multi-Function Pocket Size Electrical / Electronic Tester

- AC VOLTAGE TEST
- CONTINUITY CHECK
- AC FAULT DETECTOR
- DC VOLTAGE & POLARITY TEST
- MICROWAVE LEAKAGE DETECTION



www.elyssacorp.com
www.digivue.com

Elyssa Corporation

Briarcliff Manor, NY 10510
800-441-9122. Fax: 800-335-5933